

PROJECT DATA

APPLICATION - Reinforced concrete bridge deck
CONTRACTOR - Mosser Construction, Fremont, OH
ENGINEER - Richland County Engineers
CONCRETE PRODUCER - Moritz Materials, Ashland, OH

FEATURED ADMIXTURES

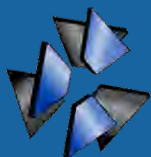
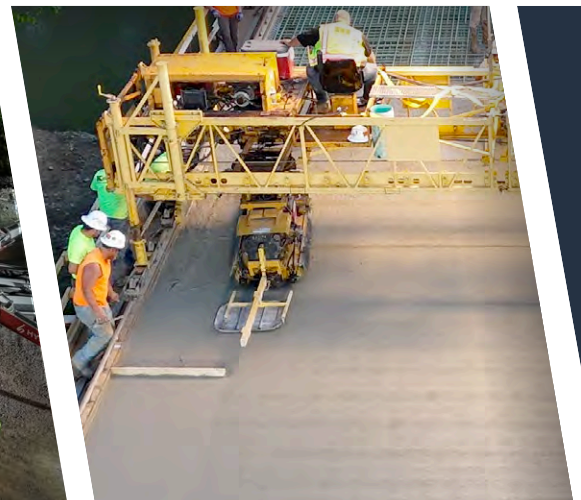
ULTRAFINISH 1L - Nano Silica admixture for enhanced finishability, surface densification, and reduced potential for shrinkage cracking.

SCOPE OF PROJECT

The Crider Road bridge was placed using ODOT specs. Moritz Materials used their state approved JMF mix design. **UltraFinish 1L** Nano Silica Admixture was used in lieu of the 7-day continuous wet cure process.

PREMIERE CONCRETE ADMIXTURES
PROJECT SPOTLIGHT

CRIDER ROAD BRIDGE MANSFIELD, OHIO



Premiere
Concrete Admixtures



508 Cedar Street
Pioneer, OH 43554



hello@premiereadmix.com
www.premiereadmix.com