

## PROJECT DATA

**APPLICATION** - Reinforced concrete bridge deck  
**CONTRACTOR** - R.G. Zachrich Construction  
**ENGINEER** - Allen County Engineers  
**CONCRETE PRODUCER** - Ernst Concrete

## FEATURED ADMIXTURES

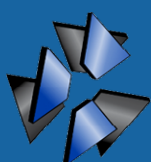
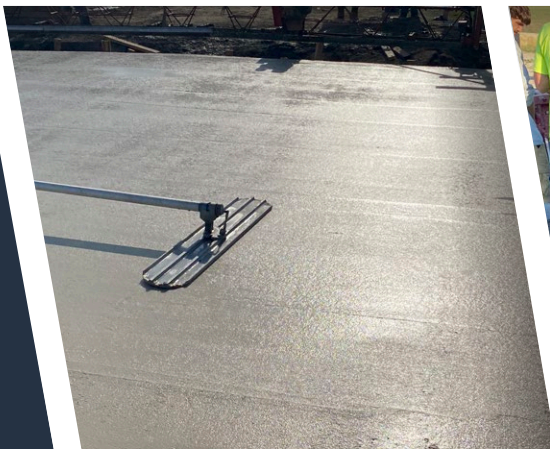
**ULTRAFINISH 1L** - Nano Silica admixture for enhanced finishability, surface densification, and reduced potential for shrinkage cracking.  
**IMPEDE® INTRASEAL** - Integral water-repelling sealer for protection from deicing brine intrusion and freeze-thaw damage.  
**FINISH IT®** - Colloidal silica finishing aid used to further improve finishing properties and slow surface evaporation in hot and windy weather.

## SCOPE OF PROJECT

The Olt Road bridge is the first bridge deck in Allen County, Ohio to use both **UltraFinish 1L** and **Impede® IntraSeal** together. This combination improves impermeability results over standard concrete, and research has shown that this combination performs equally, or better than, a typically applied curing compound. In addition, the RILEM absorption test confirms this deck shows zero water penetration at 28 days.

PREMIERE CONCRETE ADMIXTURES  
PROJECT SPOTLIGHT

# OLT ROAD BRIDGE LIMA, OHIO



**Premiere**  
Concrete Admixtures



508 Cedar Street  
Pioneer, OH 43554



hello@premiereadmix.com  
www.premiereadmix.com